

## CORIO CD-600F Refrigerated/Heating Circulator

**The new generation of laboratory circulators for routine work and standard tasks**

Refrigerated / Heating Circulators of the new CORIO™ series distinguish themselves with a great price-to-performance ratio. They are ideal for all standard tasks and routine work in laboratories and industry.

### Your advantages

- Models for internal and external applications
- Bright, white, easy to read display
- Very quiet
- Easy pump change-over (internal and external circulation)
- External pump connections (M16x1)
- USB connection
- Space-saving cooling coil design yields more usable space in the bath tank
- Bath lid and drain tap included
- Removable ventilation grid
- Refrigeration unit without side vents
- Class III (FL) according to DIN 12876-1



**Made**  
in Germany

### Technical Data

Order No.	9012704			
Model series	CORIO			
Category	Refrigerated - Heating Circulators			
Working temperature range (°C)	-35 ... +150			
Temperature control	PID			
Temperature stability (°C)	±0.03			
Setting / display resolution	0.1 °C			
Temperature Display	LED			
Heating capacity (kW)	1			
Cooling capacity (Medium Ethanol)	°C	20	0	-20
	kW	0.6	0.53	0.22
Pump capacity flow rate (l/min)	15			
Pump capacity flow pressure (psi)	5.08			
Bath opening / bath depth (W x L / D inch)	8.6 x 5.9 / 5.9			
Pump connections	M16x1			
Barbed fittings diameter (inner dia. / mm)	8 / 12			
Filling volume liters	5 ... 7.5			
Refrigerant	R404A			
Ambient temperature	5...40 °C			
Dimensions W x L x H (inch)	16 x 18.5 x 27.2			
Weight (LBS)	79.4			
Included with each unit	2 each barbed fitting for tubing 8 and 12 mm inner dia. (pump connections M16x1 male)			

Bath tank	Stainless steel
Bath cover	integrated
Cooling of compressor	Air
Available voltage versions	230 V / 50 Hz 208 V - 230 V / 60 Hz 115 V / 60 Hz 100 V / 50-60 Hz

## Characteristics



**100% Checked.**  
100% testing. 100% quality. Each CORIO™ undergoes thorough quality testing before leaving the factory.



**More bath.**  
Designed for more comfort. Thanks to the recessed cooling coil, the internal bath provides more space.



**ATC.**  
Absolute Temperature Calibration, 1-point calibration (CD).



**No sweat.**  
CORIO™ works robust and reliable – even at ambient temperatures of up to +40 °C.



**Brilliant.**  
Bright display with strong illumination can be viewed easily from a long distance.



**Quick start.**  
Individual JULABO consultation and comprehensive manuals at your disposal.



**Cleaning. Easy.**  
Not only do the new units look good. The functional design makes cleaning a breeze.



**Safety.**  
CORIO™ CD complies with Class III (FL) according to DIN 12876-1 and switches off automatically in case of high temperature or low liquid level alarm.



**Click.**  
One for all. Control the circulator and the refrigeration unit with only one power switch.



**Satisfied customers.**  
11 subsidiaries and more than 100 partners worldwide guarantee fast and qualified JULABO support.



**Condensation protection.**  
Superb design solution. Integrated ventilation directs air over the bath lid and minimizes condensation.



**Saves energy.**  
As you desire. Various modes for the refrigeration unit: permanently on, permanently off, or on as refrigeration is needed.



**Connection. Easy.**  
Inclined pump connections (M16x1) facilitate the connection of applications. Each unit includes 2 barbed fittings of 8/12 mm diameter each.



**Services 24/7.**  
Around the clock availability. You can find suitable accessories, data sheets, manuals, case studies, and more at [www.julabo.com](http://www.julabo.com).



**Everything at the front.**

All operating controls and safety functions are accessed easily and comfortably from the front.



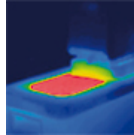
**Soft. Quiet.**

CORIO™ circulators are cushion mounted. Protects the electronics. Reduces operating noise and vibration.



**Exact.**

You can rely on it. PID1 control and 'Active Cooling Control' make the new CORIO™ precise and perfect.



**Solid.**

Minimized energy loss through high-quality insulation.



**Green technology.**

Development consistently applied environmentally friendly materials and technologies.



**Space saving. Free up space.**

Place your CORIO™ right next to an application, another unit, or wall. That saves space. This is made possible by eliminating vents and connections on the sides.



**Handle with ease.**

Makes day-to-day work easy. Comfortably move your CORIO™ around by using the ergonomic handles (front and rear).



**Stable.**

Rubber feet allow for a secured footing of your CORIO™ to prevent damage to your laboratory equipment.



**Internal. External.**

The pump is controlled via a lever located directly below the display. Easily change between internal and external circulation.



**Switch on. And off you go.**

Intelligent operating concept. Ready for operation with just a few quick and easy steps.



**JULABO. Quality.**

Highest standards of quality for a long product life.



**Tidy.**

The special drain tap for easy draining of bath fluids without tools.



**Locked in.**

The lockable power plug guarantees safe connection. More process safety.



**Touching permitted.**

Optimum safety. The ergonomic plastic handle protects your fingers from hot surfaces.



**Maintenance. Friendly.**

The front magnetic grid can be removed easily for user-friendly cleaning and maintenance. Without tools.



**Unique.**

Specially designed pyramids ensure that the condensed liquid drips directly back into the bath.



**Mobile.**

Extra easy handling. Integrated castors for easy repositioning of refrigerated circulators. (CD-600F, CD-601F, CD-900F, CD-1000F,



**USB.**

Remote control made easy. CORIO™ CD circulators feature a USB connection.

CD-1001F)

**JULABO Contact**

JULABO USA Inc.  
884 Marcon Boulevard, Allentown, PA 18109  
Phone: 610-231-0250  
Phone: 800-458-5226 (Toll-Free)

[info.us@julabo.com](mailto:info.us@julabo.com)

**JULABO Services**

Product finder, Accessory search, 1 PLUS Warranty,  
Catalog download, Callback service, Operating manuals,  
Safety data sheets, Software and more

[www.julabo.com](http://www.julabo.com)