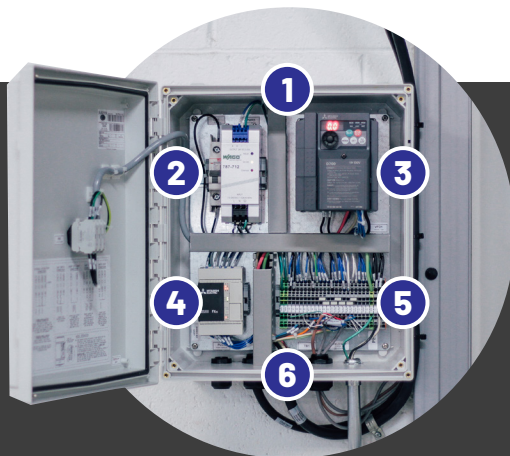


Intelligent Control System

Goff's advanced Intelligent Control System (ICS) features a programmable logic controller and variable frequency drive system in a pre-wired NEMA4X enclosure, featuring our Smart Touch Screen interface. This system maximizes your door's activation and safety capabilities to get the most out of your investment.

Standard on our G2 5400, G2 4200, G2 2800, Clean Guard, Harsh Guard, & Wash Guard Elite Doors.

- **Variable frequency drive** for smoother & more efficient motor operation, reducing temperatures and increasing durability.
- **Programmable logic controller** interprets a wide array of sensor & switch inputs to control the door.
- **Advanced timing & integration** capabilities allow door interlock, fire alarm safety activation, and more.
- **Ships pre-wired in a NEMA4X enclosure** to simplify installation and start-up procedures.
- **Available in all voltage & phase inputs** ranging from 120V single phase to 480V three-phase.
- **Comes standard with Smart Touch Screen.**



1. NEMA4X Enclosure protects your electronics regardless of environment.
2. Dedicated isolated power supply & circuit breaker to protect ICS logic computer.
3. VFD maximizes motor efficiency through variable up/down speeds during motion.
4. Fully programmable logic controller can integrate for advanced functionality.
5. Pre-wired and labeled terminals simplify installation & sensor or switch additions.
6. 13' Supply cable comes attached and ready with quick connects at the motor terminals.

GOFF'S ADVANTAGE:

Smart Touch Screen

- Enables touch screen door activation
- Monitors system safety status & fault codes
- Displays auto-close timer countdown
- Simplifies maintenance to reduce downtime

